

"Internet of Things" Emerges



to Access Points



erization



# What's in the Cards for Enterprise IT Culture?

Inspired by the Wheel of Fortune

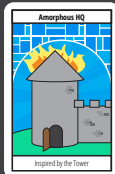
ant



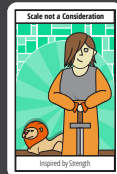
# Tarot Card Inspiration



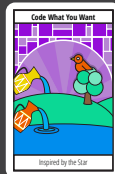
Fulfillment  
Success  
Integration



Chaos  
Sudden change  
Impact  
Hard times



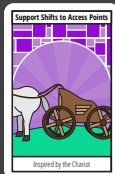
Self-control  
Being solid  
Patience  
Compassion



Calmness  
Free-flowing love  
Trust



Action  
Consciousness  
Concentration  
Personal power



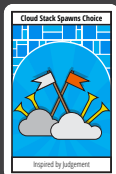
Conquest  
Honor  
Victory  
Energy



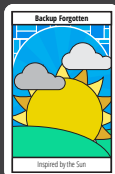
Experience  
Cleverness  
Exuberance



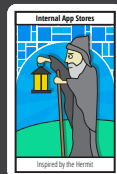
Turning point  
Opportunities  
Possibilities



Judgement  
Rebirth  
Inner calling  
Absolution



Optimism  
Expansion  
Being radiant  
Positive feelings

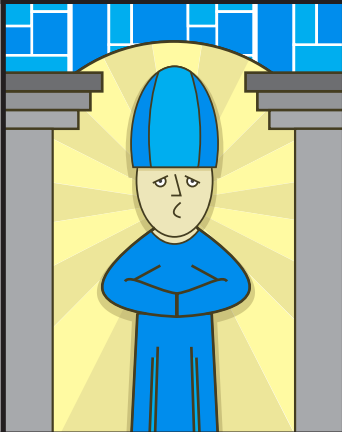


Introspection  
Silence  
Guidance  
Reflection



Education  
Knowledge  
Status quo  
Institution

## Developerization



Inspired by the [Hierophant](#)

**The “developerization” of IT pushes technical decision-making down to individual contributors**

[learn more](#)

**"Internet of Things" Emerges**

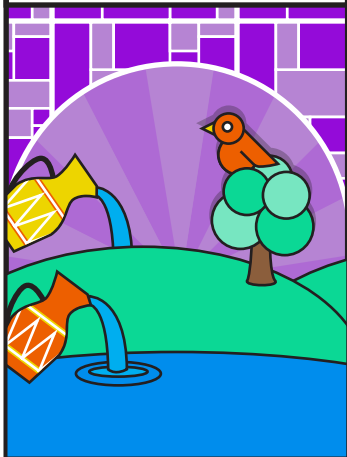


Inspired by the [Wheel of Fortune](#)

**"The Internet of Things"  
and wearable technology  
creates hairline fractures  
in network security**

[learn more](#)

**Code What You Want**

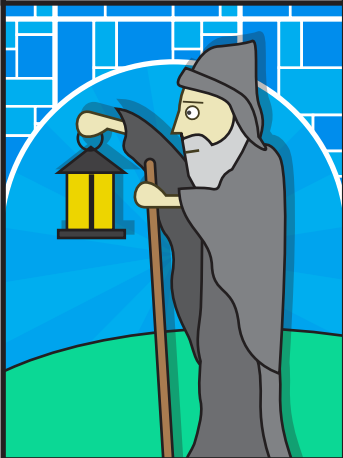


Inspired by the [Star](#)

**Cloud services allow  
developers to pick &  
choose what they code**

[learn more](#)

## Internal App Stores



Inspired by the [Hermit](#)

**Internal “app stores” turn  
IT departments into  
mixed-platform merchants  
for employees**

[learn more](#)

## Freemium Sinks Hooks into IT

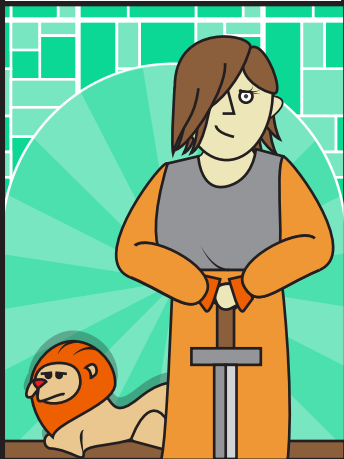


Inspired by the [Fool](#)

**Freemium models shift from limited features to limited seats, sinking hooks into enterprise before IT takes notice**

[learn more](#)

**Scale not a Consideration**



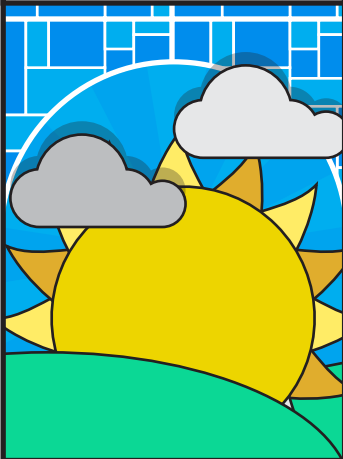
Inspired by [Strength](#)

**Hyper-elastic infrastruc-  
ture eliminates scale as a  
consideration**

[learn more](#)



## Backup Forgotten

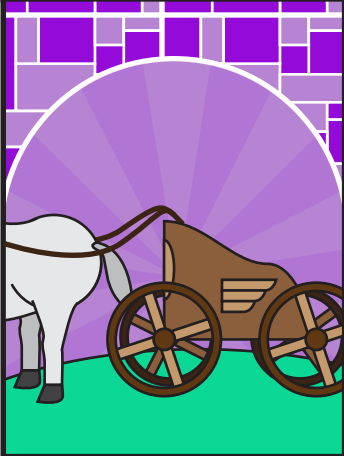


Inspired by the [Sun](#)

**Thanks to personal clouds  
& redundancy, we forget  
about backup**

[learn more](#)

## Support Shifts to Access Points



Inspired by the [Chariot](#)

**Support shifts from  
devices to access points**

[learn more](#)

## Amorphous HQ



Inspired by the [Tower](#)

**Cloud collaboration  
antiquates the concepts of  
time and geography,  
creating an amorphous  
corporate HQ**

[learn more](#)

## Cloud Stack Spawns Choice



Inspired by [Judgement](#)

**Single-vendor suites crack under the weight of the Cloud Stack**

[learn more](#)

## Pre-support Emerges

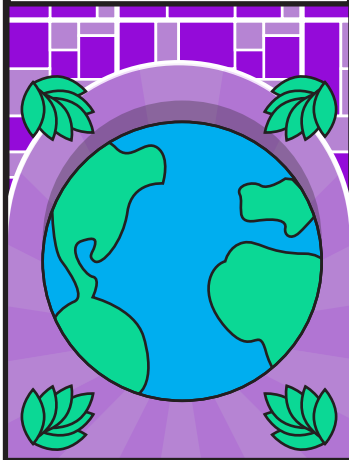


Inspired by the [Magician](#)

**Search engines, AI & IDEs  
converge to answer  
questions ... before they're  
asked**

[learn more](#)

## Messaging Superchannel



Inspired by the [World](#)

**“Superchannel” converges messaging in all formats -- and user, not IT, owns settings**

[learn more](#)

To remove the hassle of building backends for your mobile apps, **try Kinvey's Backend as a Service.**



Artwork by **Jake McKibben**

Story by **Joe Chernov** and **Brian Whalley**